



Mission: To ensure that every patient has access to innovative treatments and improve patient lives.

Capabilities Overview



About **Profound**



ABOUT **PROFOUND**

At Profound, we maintain robust quality standards and provide a consistent interface for sponsors and CROs across all sites. Our tight integration with healthcare providers allows us to create prescreened pools of patients, enabling rapid patient identification and shortened recruitment timelines.

**a new day for
clinical trials**



INTEGRATED
SITE OPERATIONS



FAST
ACTIVATION



RELIABLE
ENROLLMENT



ENHANCED
STUDY CONDUCT

PROFOUND'S **EMBEDDED MODEL**

- Partnerships with 700+ practicing physicians having access to 750,000+ identified patients
- Centralized support across feasibility, budgeting, contracting, quality, regulatory, and reporting
- Standardized Quality Management Systems, Training, Equipment, Etc.
- EMR Access to all Profound Research sites

KEY CHARACTERISTICS

- Established patient relationships
- Specialized untapped capabilities
- Access to untapped and diverse patient populations
- Centralized contracting, budgeting, and startup efficiencies
- Deep PI experience
- Central IRB
- Dedicated research staff

PROFOUND LEADERSHIP



LORA PARHOVNIK, PhD

Chief Executive Officer

- Former CEO, Accel Research Sites
- Former Vice President, Clinical Research, GR Dome Medical



MICHAEL SHIPTON

Chief Commercial Officer

- Former Chief Commercial Officer, Science 37
- Former Senior Vice President, Customer Solutions, Syneos



NICOLE BIELAKOWSKI

SVP, Central Operations

- Former Vice President, Clinical Research Operations, Vault Health
- Former Head of Global Business Development, Amazon



GREGORY SAHAGIAN, MD

Chief Scientific Officer

- CEO, The Neurology Center of Southern California
- Neuroscience Medical Director, Scripps Health



MARTY FORREST ANDERSON

Chief Operations Officer

- Former CSO, Meridian Clinical Research
- Former Vice President, Clinical Development, Syneos



SARA SCHMIDT

Head of Quality

- Former Head of Quality and Compliance, CVS
- Former Director of Quality Assurance, IQVIA



JONATHAN FELDSTEIN, MD

President

- Founder and Former President, Resilience Health
- Former Engagement Manager, McKinsey & Co Life Sciences
- Founder, Solace Anesthesia and Pain Medicine



DAVID LAMADRID

Chief Financial Officer

- Former Chief Financial Officer, Accel Research Sites
- Former Chief Financial Officer, Tandem Genetics



COURTNEY C. MILLER

SVP, People

- Former Director, HR Strategic Partner, Bon Secours Mercy Health
- Former Vice President, Human Resources, HCA Healthcare



PETER KAUFMAN

Associate General Counsel

- Former Associate General Counsel, Elligo Health Research
- Former General Counsel / Ethics & Compliance Officer HCA Healthcare

SITE FOOTPRINT



25 LOCATIONS



3 U.S. GEOGRAPHIES

Impending geography expansion to additional U.S. Regions in 2024



SOUTHERN CALIFORNIA HEART SPECIALISTS

- Pasadena, CA
- Arcadia, CA



SOUTHERN CALIFORNIA NEUROLOGY CONSULTANTS

- Pasadena, CA



ARTHRITIS CONSULTANTS OF NORTH COUNTY

- Oceanside, CA



NEUROLOGY CENTER OF SOUTHERN CALIFORNIA

- Escondido, CA
- Temecula, CA
- La Jolla, CA
- Carlsbad, CA
- Poway, CA



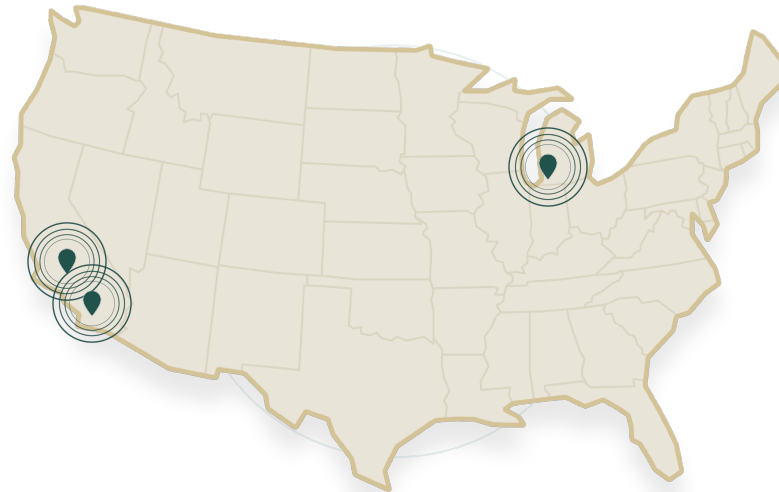
TRI-CITY MEDICAL CENTER

- Oceanside, CA
- Seaside Medical Group
- Internal Medicine | Vaccines



DERMATOLOGY MEDICAL GROUP OF NORTH COUNTY

- Oceanside, CA
- Encintas, CA
- Carmel Valley, CA



MICHIGAN HEALTHCARE PROFESSIONALS



RADIATION ONCOLOGY

Troy, MI



MHP CARDIOLOGY AND VASCULAR ASSOCIATES

Bloomfield Hills, MI



MEDICAL ONCOLOGY

Dearborn, MI



MEDICAL ONCOLOGY

Royal Oak, MI



NEUROLOGY

Rochester Hills, MI



PRIMARY CARE

Clarkston, MI



MHP TriAtria

Farmington Hills, MI
Neurology | Oncology |
Endocrinology | Cardiology



NEUROLOGY

Alzheimer's | MS | Stroke |
Parkinson's | Epilepsy | Depression |
Migraine | Dementia | Myasthenia Gravis



METABOLIC / ENDOCRINOLOGY

Type 2 Diabetes | Thyroid Disease |
Renal Disease | Obesity | Sickle Cell Anemia |
Osteoporosis | T1DM | T2DM | NAFLD



ONCOLOGY

Blood Cancers | Solid Tumors |
Breast | Lung | Prostate |
Radiopharmaceuticals | Soft Tissue Sarcoma



RESPIRATORY / PULMONARY

Asthma | Pulmonary Fibrosis |
Respiratory Infections | COPD



DERMATOLOGY

Atopic Dermatitis | Psoriasis |
Hidradenitis Suppurativa | Vitiligo |
Anti-Aging | Alopecia



GASTROENTEROLOGY

GERD | Ulcerative Colitis |
Crohn's Disease



CARDIOVASCULAR

Heart Failure | Hypertension |
Coronary Artery Disease |
Dyslipidemia | Hemostasis



RHEUMATOLOGY

Lupus | Osteoarthritis |
Rheumatoid Arthritis



MULTIDISCIPLINARY

Neurology | Oncology | Primary Care |
Cardiovascular | Endocrinology |
Rheumatology | Vaccines



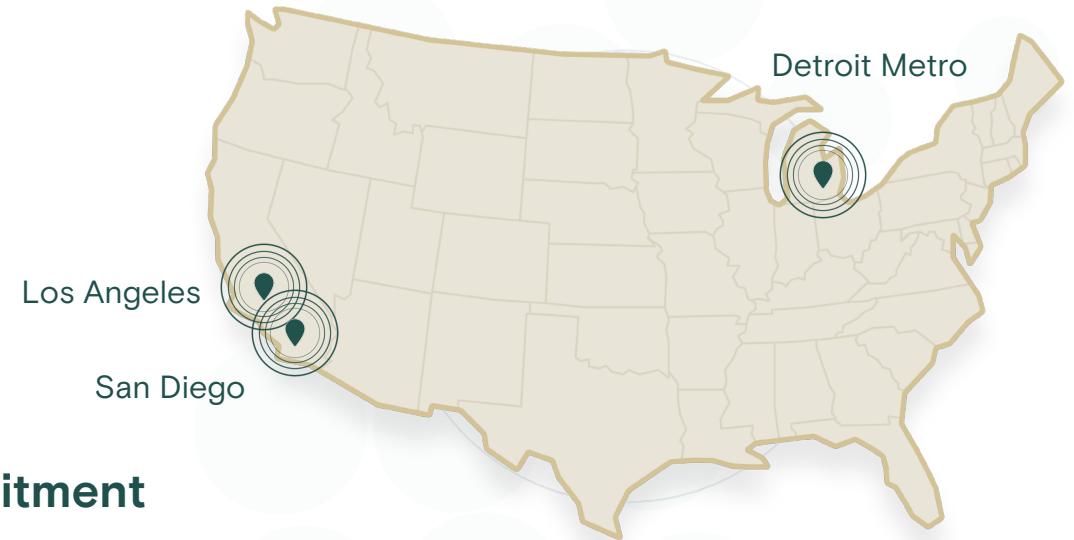
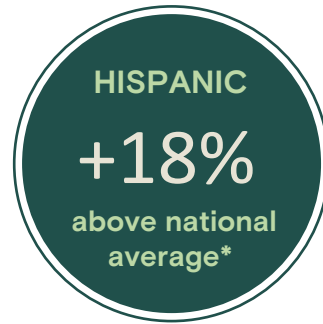
OPHTHALMOLOGY

AMD | Dry Eye

THERAPEUTIC AREAS

The indications shown are not comprehensive of Profound.
A complete list of supported indications can be provided upon request.

COMMITMENT TO **DIVERSITY**



Our Strategies to Enhance Diversity in Patient Recruitment

- Focus on Geography: Establish partnerships with sites in urban and metro areas
- Establish Centralized Hubs: As participants prefer local accessibility, we minimize travel distances
- Community Immersion: Participation in health fairs, providing screenings and related services

* For Select Sites

** Opportunities to increase further leveraging recruitment marketing

LAB EXPERTISE & CAPABILITIES

CLIA Waved Sites/Facilities
Sample Processing and Collection

Onsite Pharmacies for Oncology

Blinded & Unblinded Capabilities
Local Compounding Pharmacies

Professionally Maintained and Calibrated
Laboratory Grade Equipment

Laminar Hood for IV Preparation

Onsite Biopsies for Dermatology

Local PBMC Capabilities

Freezers
-20, -80 Degree Celsius Freezers

Continuous Temperature Monitoring
Ambient, Refrigerated, Ultra-Cold

Diagnostic
Antigen, Molecular PCR Testing, Nasal Swabs

Central Support



CENTRAL SUPPORT

Technology

Best in class tech stack which offers transparent, standardized and efficient support of sites, sponsors, and CROs

Feasibility

Central Feasibility resources dedicated to supporting rapid, data driven, questionnaire completion through extensive protocol analysis paired with centralized EMR access

Budget & Contract

- One CDA, budget, and CTA for all Profound Research Sites
- Industry-leading turnaround times

Regulatory & Startup

- Centralized regulatory processes
- eRegulatory platform & pre-populated PSV regulatory binders to quickly accommodate remote PSVs
- Standardized and streamlined study start-up process

Quality

- Dedicated and independent quality team
- Electronic QMS and LMS
- Standardized site and investigator training and continuous improvement plans

Recruitment

- Dedicated onsite and central recruitment teams supported by Clinical Trial Management System (CTMS)
- In-house digital and traditional marketing campaigns with IRB approval support
- Robust reporting, outcomes, and KPI's for study enrollment

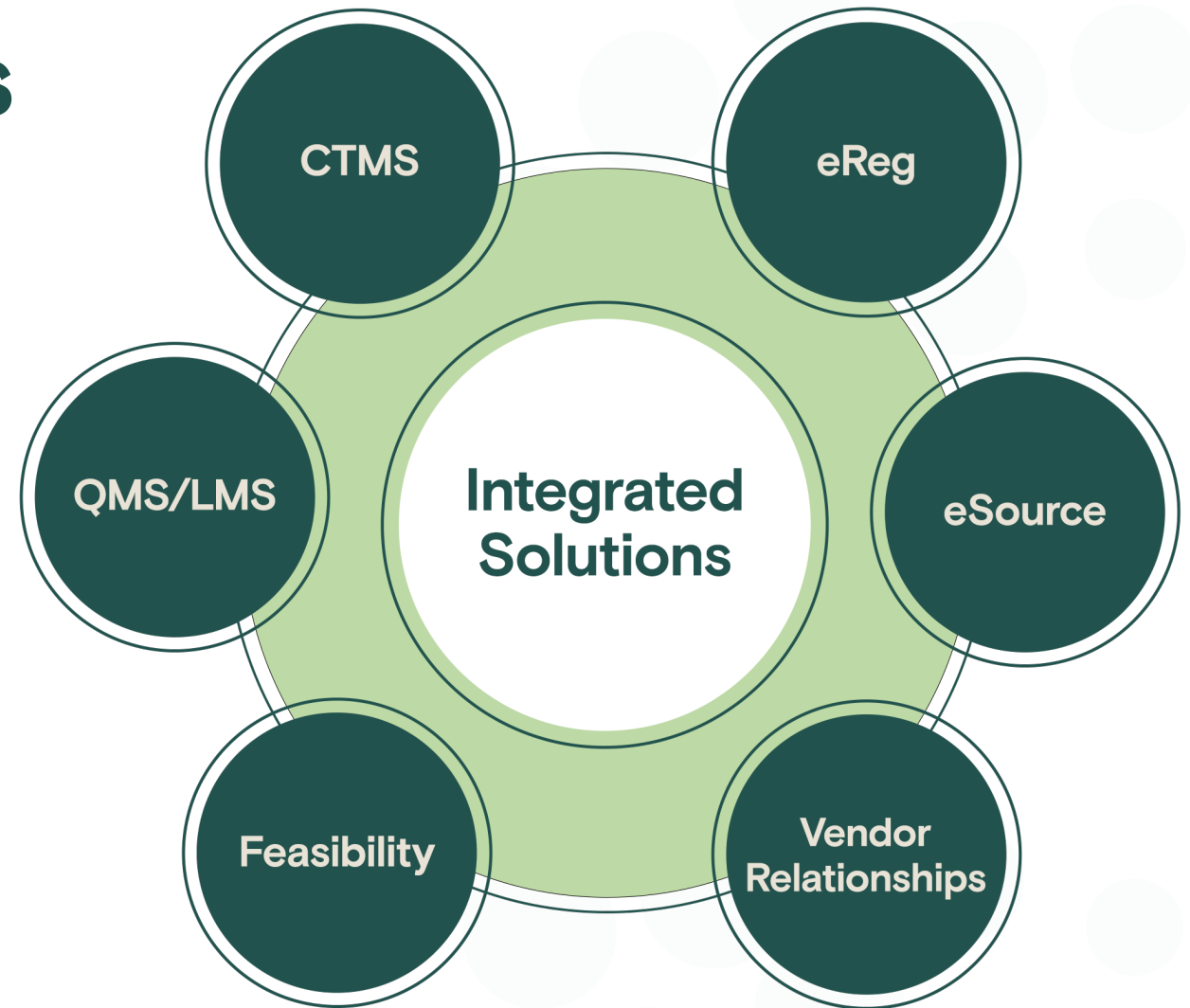
Imaging

- PET, MRI, CT, and DEXA scans
- Local and onsite capabilities
- Customized tracer capabilities and nuclear medicine

CENTRAL SUPPORT INTEGRATED SOLUTIONS

To ensure fast study startup timelines and fully prepared research sites, we offer:

- Integrated technology suite deployed across all Profound Research locations
- Standardized SOPs, processes, and reporting
- eConsent capabilities
- Monitoring >100 data elements in real time
- Dedicated source development team
- Established Local and Central Vendor Relationships
 - Labs | Imaging | Raters



CENTRAL SUPPORT FEASIBILITY

- **Central feasibility resources dedicated to supporting SFQ completion, including:**
 - EMR access, informing data-driven enrollment funnel
 - Experience and past performance data
 - Equipment and assessment capabilities
 - PI CVs, licenses, and other necessary information
- **3-4-day feasibility turnaround** enables Profound to consolidate startup timelines to 6-8 weeks from receipt of protocol



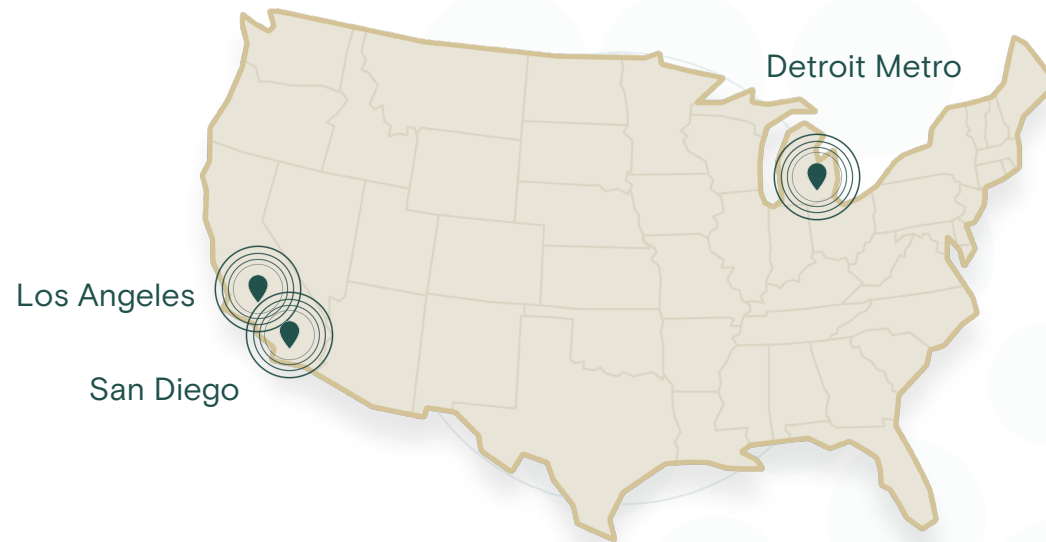
CENTRAL SUPPORT BUDGET & CONTRACTS

- **One for all Profound Sites**

- One CDA
- One Budget
- One CTA
- Single Point of Contact for CDA, CTA, and Budgets

- **Accelerated Turnaround**

- 24-Hour CDA Turnaround
- 3-Day Budget Turnaround
- 10-Day CTA Turnaround



REGULATORY & **STARTUP**

- **Centralized Regulatory Processes**

- Study Start-Up and Maintenance
- Expedited Turnaround Times
- Study Start-Up Documents (48-72hrs)
- Electronic Pre-Site Selection (PSSV) Binder

- **Maintenance of Study Documents**

- Comprehensive Document Management
- Version Control and Access Control
- Regulatory Audit Preparedness

- **Study Start-Up Process**

- Streamlined and Standardized
- Faster Approvals and Activation
- Reduced Administrative Burden
- 48-72hr Document Preparation/Binder access

- **Benefits of an eRegulatory Platform**

- Improved Efficiency and Compliance
- Enhanced Collaboration Across Sites
- Real-time Tracking and Reporting
- Remote Monitoring Capabilities

- **Electronic Pre-Site Selection (PSSV) Binder**

- Accelerated Site Selection Process
- Easy Accessibility for Reviewers
- Enhanced Visibility into Site Capabilities



- **Team**

- Regulatory leadership: Approximately 10 years of industry experience
- Regulatory specialist: Average of 4 years industry experience



- **Standardized Forms and eRegulatory Technology**

- Regulatory leadership: Approximately 10 years of industry experience
- Regulatory specialist: Average of 4 years industry experience

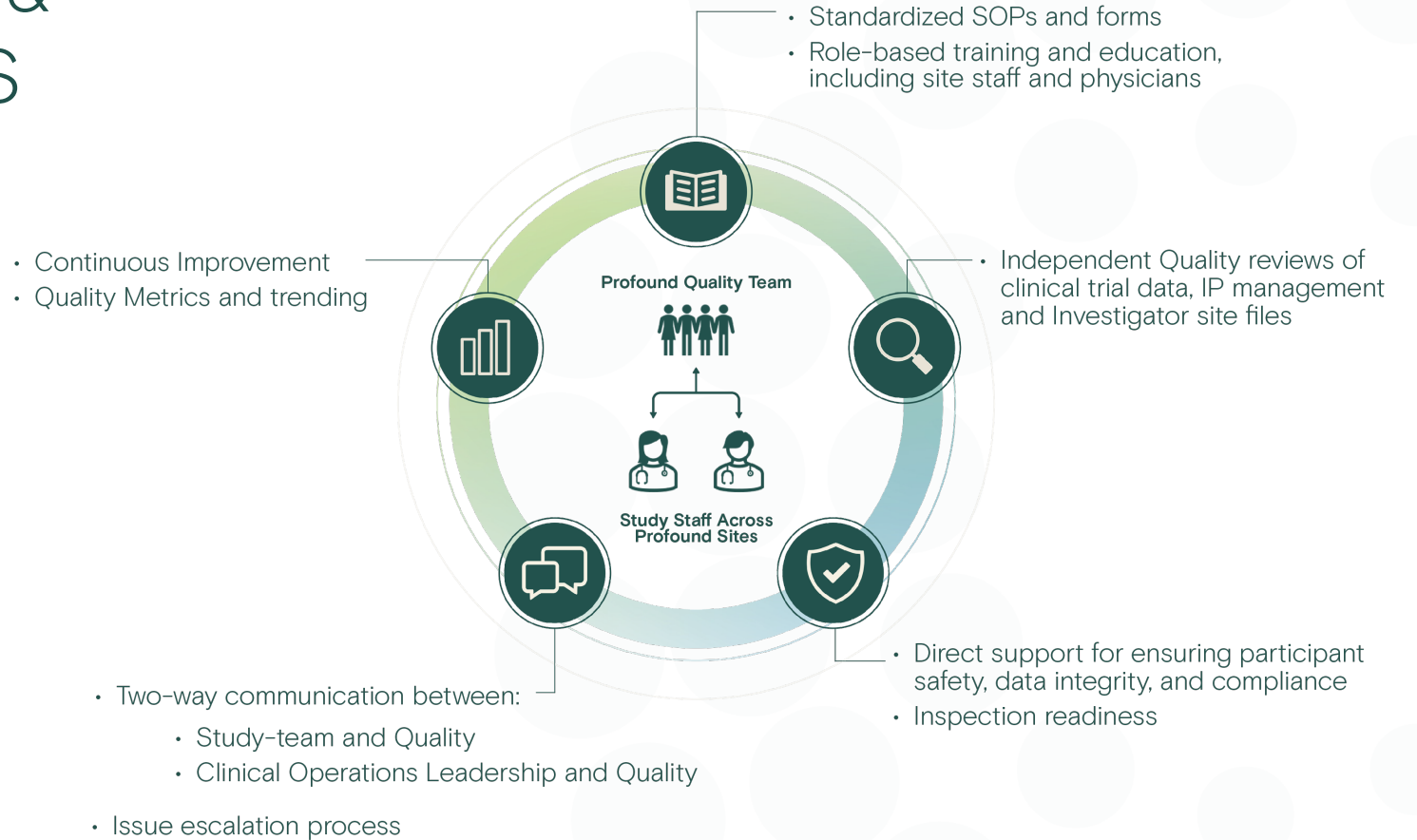


- **Training**

- Learning and Development Team
- Dedicated Regional Regulatory Specialist
- Coordinator reference manual

CENTRAL SUPPORT QUALITY, COMPLIANCE & INSPECTION READINESS

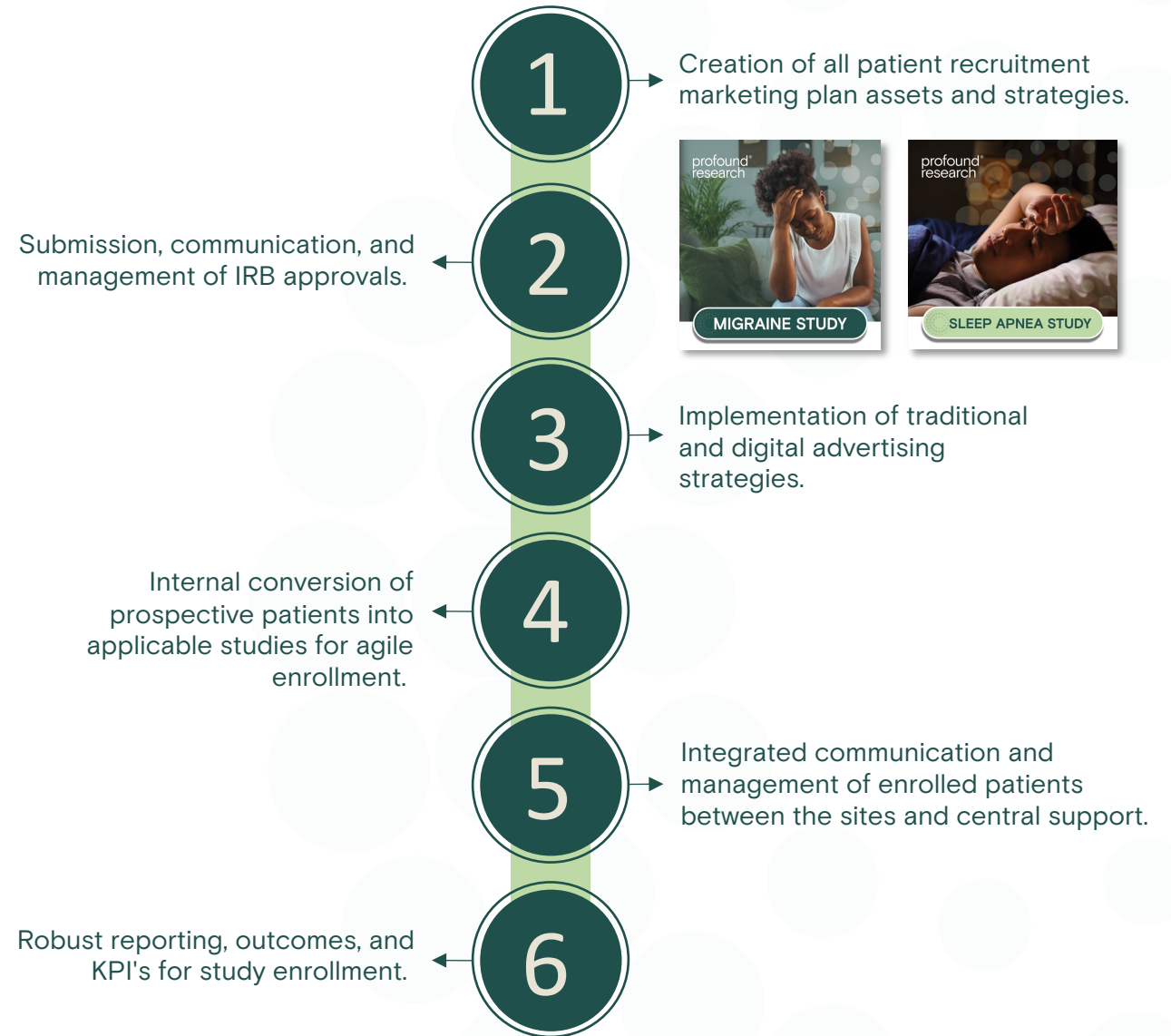
- **Dedicated and independent quality team**
- **Quality management system**
 - Single system
 - Consistency across locations
 - Same SOPs and forms for all locations
- **Training program**
 - Role-based training consistent across all locations
 - Central point of contact dedicated to physician engagement
 - Onboarding for naive investigators
- **Physician escalation pathway**
- **Continuous improvement on metrics and reporting**
 - Quality events and findings
- **Educators**
 - Regional and local site development, clinical educators



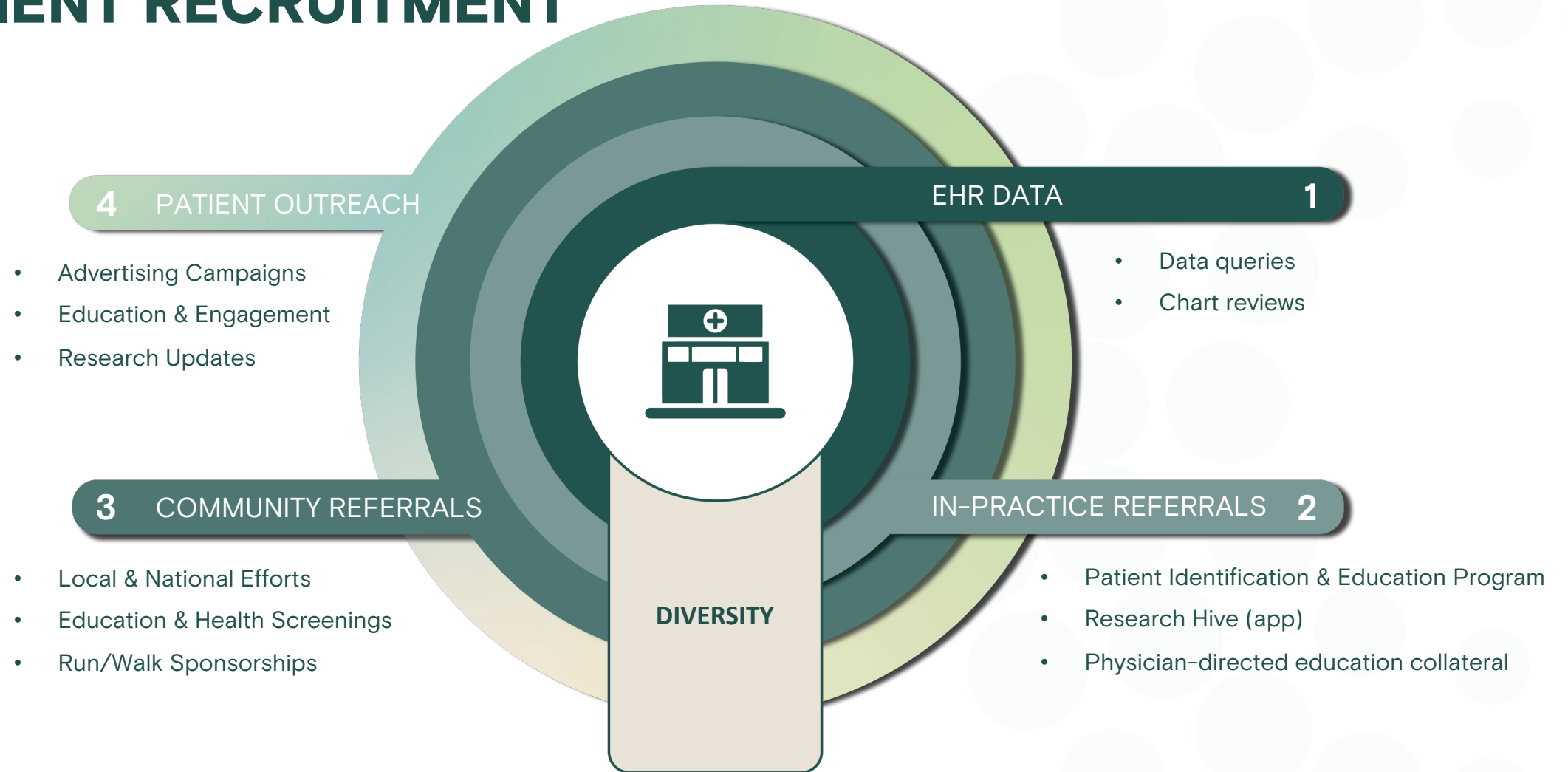
CENTRAL SUPPORT PATIENT RECRUITMENT

- In-house, digital and traditional patient recruitment team provides:
 - Marketing material design and production
 - IRB and regulatory submission support for expedited approvals
 - Clinical Trial Management System (CTMS) support for all studies
 - Progressive tactics and tracking for all marketing and advertising

Our in-house team enables an intimate understanding of our geographies, site cultures, patient expectations, and how each apply to your studies.



CENTRAL SUPPORT PATIENT RECRUITMENT



Therapeutic Area **Summaries**



THERAPEUTIC AREAS



NEUROLOGY



METABOLIC / ENDOCRINOLOGY



ONCOLOGY



RESPIRATORY / PULMONARY



DERMATOLOGY



GASTROENTEROLOGY



CARDIOVASCULAR



RHEUMATOLOGY



MULTIDISCIPLINARY

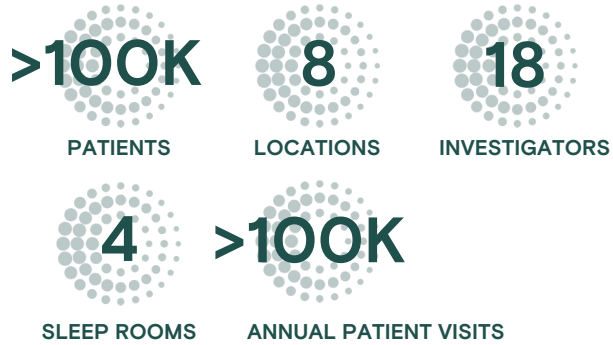


OPHTHALMOLOGY



NEUROLOGY HIGHLIGHT

HIGHLIGHTS



INDICATIONS

- Alzheimer's
- MS
- Stroke
- Parkinson's
- Epilepsy
- Depression

EQUIPMENT & PROCEDURES

- Ambient Sleep Testing
- Amyloid PET-Imaging
- Autonomic Testing
- Tau PET Imaging
- EEG
- EMG
- Polysomnography (PSG)

LOCATIONS



Neurology Center of Southern California (NCSC)

- Carlsbad
- Escondido
- La Jolla
- Poway
- Temecula

Southern California Neurology Consultants (SCNC)

- Pasadena



Michigan Healthcare Professionals (MHP)

- Rochester
- TriAtria

PRINCIPAL INVESTIGATORS



Gregory Sahagian, M.D. | NCSC

- Board Certified in Psychiatry and Neurology
- Specialization in neuromuscular disorders



Arbi Ohanian, M.D. | SCNC

- Board Certified in Neurology
- Specialization in vascular and stroke care



Benjamin Frishberg, M.D. | NCSC

- Board Certified in Psychiatry and Neurology
- Specialization in neuro-ophthalmology and MS



Esther Young, D.O. | MHP Rochester

- Board Certified in Psychiatry and Neurology
- Specialization in MS, epilepsy, and stroke



Kinjal Madhav, M.D. | NCSC

- Board Certified in Family and Sleep Medicine
- Specialization in sleep apnea, narcolepsy, and RLS



Brian Kirschner, M.D. | MHP TriAtria

- Board Certified in Neurology and Clinical Neurophysiology
- Specialization in NCS/EMG, EEG, evoked potentials, botulinum toxin injections and more



CARDIOVASCULAR HIGHLIGHT

HIGHLIGHTS

49K
PATIENTS

4
LOCATIONS

9
INVESTIGATORS

32K
ANNUAL PATIENT VISITS

LEAD INVESTIGATORS



Gregory Giesler, M.D. | SCHS

- Fellow, American College of Cardiology
- Huntington Hospital Resident Teaching Advisor



Abdul R. Halabi, M.D. | MHP CAVA

- Fellow, American College of Cardiology
- Director, Peripheral Vascular Intervention, Saint-Joseph Mercy Oakland Hospital



Dustin Feldman, D.O. | MHP TriAtria

- Fellow, American College of Cardiology
- Board Certified in Internal Medicine, Nuclear Cardiology and Echocardiography
- Specialization in Cardiovascular Disease and Interventional Cardiology

INDICATIONS

- Heart Failure
- Hypertension
- Coronary Artery Disease
- Dyslipidemia
- Hemostasis
- and more

EQUIPMENT & PROCEDURES

- Ankle Brachial Index
- Carotid Ultrasound
- Digital Radiography
- Echocardiography
- Holter Monitoring
- Loop Recorder Implantations
- Nuclear Cardiology & Stress
- Pacemaker Clinic
- and more

LOCATIONS



Southern California Heart Specialists (SCHS)

- Pasadena
- Arcadia



Michigan Healthcare Professionals Cardiology and Vascular Associates (MHP CAVA)

- Bloomfield Hills
- Farmington Hills



MEDICAL ONCOLOGY HIGHLIGHT

HIGHLIGHTS

10K
PATIENTS

3
LOCATIONS

13
INVESTIGATORS

12K
ANNUAL PATIENT VISITS

LEAD INVESTIGATORS



Faisal Musa, M.D. | MHP Dearborn

- Board Certified Medical Oncologist
- Physician with Michigan Healthcare Professionals
- Specialization in Hematology and Oncology



Savitha Balaraman, M.D. | MHP Royal Oak

- Board Certified in Medical Oncology and Internal Medicine
- Physician with Michigan Healthcare Professionals
- Specialization in Hematology and Oncology

INDICATIONS

- Hematology
- Pancreatic
- Hepatocellular carcinoma
- Breast cancers
- Lung
- Breast
- and more

EQUIPMENT & PROCEDURES

- Mobile PET Scanner
- MRI
- Infusion Suite with Pump
- Laminar Airflow Hood
- ECHO/MUGA
- 12-Lead ECG
- On-Site Pharmacy

LOCATIONS



Michigan Healthcare Professionals Hematology & Oncology Consultants (MHP)

- Dearborn
- Royal Oak
- TriAtria



RADIATION ONCOLOGY HIGHLIGHT

HIGHLIGHTS

20K
PATIENTS

1
LOCATIONS

4
INVESTIGATORS

178K
ANNUAL PATIENT VISITS

PRINCIPAL INVESTIGATORS



Krisha Howell, M.D. | MHP

- Board Certified Radiation Oncologist
- Physician with Michigan Healthcare Professionals
- Specialization in Soft Tissue Sarcoma (STS), Brachytherapy, and Uterine Cancer



Frank Vicini, M.D. | MHP

- Board Certified Radiation Oncologist
- Physician with Michigan Healthcare Professionals
- Specialization in Radiation Oncology, Breast Cancer, Prostate Cancer

INDICATIONS

- Thyroid
- Bone
- Brain
- Breast
- Sarcoma
- Colon
- and more

EQUIPMENT & PROCEDURES

- Mobile PET Scanner
- MRI
- CT
- Local Lab Availability
- X-Ray
- DEXA Scanning
- Ultrasound
- Infusion Pump
- Gamma Counter
- On-Site Pharmacy

LOCATIONS



Michigan Healthcare Professionals Radiation Oncology

- Troy



PRIMARY CARE HIGHLIGHT

HIGHLIGHTS



PATIENTS



LOCATIONS



INVESTIGATORS



ANNUAL PATIENT VISITS

LEAD INVESTIGATORS



Barry Feldman, M.D. | MHP TriAtria

- Specializes in Allergy, Geriatrics, Internal Medicine, & Infectious Disease
- Co-founder of Michigan Healthcare Professionals



Dean Moscovic, D.O. | MHP CLARKSTON

- Board Certified in Internal Medicine
- Physician with Michigan Healthcare Professionals



Paul Lizotte, D.O. | TCMC

- Board Certified in Internal Medicine and Radiology
- Specialization in osteopathic medicine, imaging and radiology



Michael Margolis, M.D. | MHP Rochester

- Board Certified in Internal Medicine
- Physician with Michigan Healthcare Professionals

INDICATIONS

- Osteoporosis
- Type I/II Diabetes
- Thyroid disease
- Obesity
- GERD
- Anemia
- Hypoglycemia
- and more

EQUIPMENT & PROCEDURES

- Centrifuge
- ECG
- EMG
- DEXA Scanning
- -20 and -80 Degree Celsius Freezers
- Refrigerators
- Blood Pressure Monitor
- Scale with Stadiometer

LOCATIONS



Tri-City Medical Center (TCMC)

- Oceanside



Michigan Healthcare Professionals (MHP)

- Clarkston
- TriAtria
- Rochester



DERMATOLOGY HIGHLIGHT

HIGHLIGHTS

40K
PATIENTS

4
LOCATIONS

3
INVESTIGATORS

170K
ANNUAL PATIENT VISITS

LEAD INVESTIGATORS



Sherry Rotunda, M.D. | DMG

- Board Certified Dermatologist
- Medical Director of DMG
- 10+ Years selected as top doctor in dermatology



Alina Goldenberg, M.D. | DMG

- Board Certified Dermatologist
- Master of Clinical Research at UCSD



Alexander Ernst, M.D. | MHP ROCHESTER

- Board Certified Dermatologist

INDICATIONS

- Atopic Dermatitis
- Psoriasis
- Vitiligo
- Anti-Aging
- Alopecia
- and more

EQUIPMENT & PROCEDURES

- Body Surface Area
- Eczema Area and Severity Index
- Hand Eczema Severity Index
- Psoriasis Area and Severity Index
- Physician Global Assessment
- Six Area, Six Sign Atopic Dermatitis
- Severity Scoring of Atopic Dermatitis
- Visual Analogue Scale
- Vitiligo Area Scoring Index
- Wood's Lamp

LOCATIONS



Dermatologist Medical Group of North County (DMG)

- Oceanside
- Encintas
- Carmel Valley



Michigan Healthcare Professionals (MHP)

- Rochester



RHEUMATOLOGY HIGHLIGHT

HIGHLIGHTS



PATIENTS



LOCATIONS



INVESTIGATORS



ANNUAL PATIENT VISITS

LEAD INVESTIGATORS



Paul Brion, MD | ACNC

- Board Certified Rheumatologist
- Specializations in rheumatoid arthritis, psoriatic arthritis, ankylosing spondylitis, gout, osteoarthritis, osteoporosis, and systemic lupus



Etleva Bejko, MD | ACNC

- Board Certified Rheumatologist
- Specializations in rheumatoid arthritis (RA), scleroderma, vasculitis, systemic lupus erythematosus, gout, pseudo-gout, ankylosing spondylitis, psoriatic arthritis, dermatomyositis, polymyositis, autoinflammatory diseases, osteoarthritis, bone metabolic diseases and others

INDICATIONS

- Lupus
- Rheumatoid Arthritis
- Osteoarthritis
- IIM/Dermatomyositis

EQUIPMENT & PROCEDURES

- Myositis specific antibodies (MSA)
- RetinaVue
- Transcutaneous bilirubinometer
- Freezer (-70 to -90°C)
- Access to Leukapheresis unit with Foundation for the Accreditation of Cellular Therapy
- ECHO or MUGA scan
- Infusion chairs
- Research pharmacy
- ECG
- Interventional Radiology unit for CVP

LOCATIONS



Arthritis Consultants of North County (ACNC)

- Oceanside



VACCINE HIGHLIGHT

HIGHLIGHTS



LOCATIONS



PATIENTS



INVESTIGATORS

EQUIPMENT & PROCEDURES

- Cloud based temperature monitoring
- Controlled Ambient, Refrigerated, Ultra Cold IP storage
- Dedicated Blinded and Unblinded Resources: Local PBMC processing

LEAD INVESTIGATORS



Barry Feldman, M.D. | MHP TriAtria

- Specializes in Allergy, Geriatrics, Internal Medicine, & Infectious Disease
- Co-founder of Michigan Healthcare Professionals



Dean Moscovic, D.O. | MHP CLARKSTON

- Board Certified in Internal Medicine
- Physician with Michigan Healthcare Professionals



Paul Lizotte, D.O. | TCMC

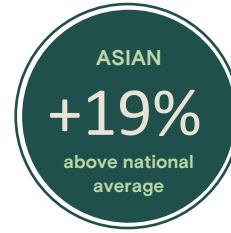
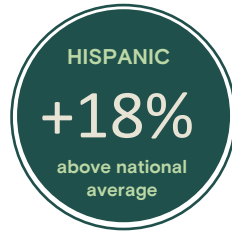
- Board Certified in Internal Medicine and Radiology
- Specialization in osteopathic medicine, imaging and radiology



Michael Margolis, M.D. | MHP Rochester

- Board Certified in Internal Medicine
- Physician with Michigan Healthcare Professionals

DIVERSITY



MULTILINGUAL

Our site network prioritizes availability of multilingual investigators and onsite staff.

LOCATIONS



Tri-City Medical Center (TCMC)

- Oceanside



Michigan Healthcare Professionals (MHP)

- Clarkston
- TriAtria
- Rochester

Michael Shipton

Chief Commercial Officer | Profound Research

919.605.8064

michael@profoundresearch.io

CONTACT